

OVERTON PUBLIC SCHOOL 24-0004  
P.O. Box 310 401 7th Street  
Overton, NE 68863-0310



Mark A. Aten, *Superintendent*  
Brian Fleischman, *Principal*  
Jill Luther, *Counselor*  
Jay Staehr, *Athletic Director*

Phone: (308) 987-2424 • Fax: (308) 987-2349 • [www.ovr.esu10.k12.ne.us](http://www.ovr.esu10.k12.ne.us)

### Happy Spring from the Principal's Office

Where has the year went? Before we know it we will be on summer vacation. Basketball and wrestling shoes have been traded in for track and golf spikes. Good luck to all of these participants during their seasons. Let's have a great end to the school year.

#### Upcoming Events:

March 24<sup>th</sup>: Spring Sports Pictures 1:30 PM  
March 24<sup>th</sup>: Summer Ball Sign-up 7 PM  
March 26<sup>th</sup>: Inter-High Day @ McCook  
March 27<sup>th</sup>: FKC Music Contest @ Amherst 9 AM  
March 27<sup>th</sup>: GO @ Overton Quad 4 PM  
March 29<sup>th</sup>: TR @ Wilcox-Hildreth 10 AM  
April 1<sup>st</sup>: HS Quiz Bowl @ ESU 10  
April 2<sup>nd</sup>: GO @ Cambridge 10 AM  
April 2<sup>nd</sup>: Inter-High Day @ North Platte  
April 3<sup>rd</sup> – 5<sup>th</sup>: FBLA State Leadership Conference  
April 4<sup>th</sup>: TR @ Pleasanton (Kearney) 8:45 AM  
April 7<sup>th</sup> – 8<sup>th</sup>: FCCLA State Leadership Conference  
April 8<sup>th</sup>: GO @ Elwood 10 AM  
April 8<sup>th</sup>: JHTR @ Overton Quad 1 PM  
April 11<sup>th</sup>: TR @ Axtell (Wilcox) 9 AM  
April 12<sup>th</sup>: ACT Test Date @ Overton  
April 12<sup>th</sup>: Prom (5PM – Pictures, 6:30 PM – Dinner)  
April 14<sup>th</sup>: FKC Quiz Bowl @ SEM  
April 14<sup>th</sup>: School Board Meeting 7:30 PM

School Happenings: Congratulations to our winter sports teams and all of your accomplishments. Special congratulations to the girls' basketball team on their regular season and FKC tournament championships. Congratulations also to Vincent Vollmer and Zachary Zeleski on qualifying for the state wrestling tournament. Special congratulations to Zachary on his 2<sup>nd</sup> place finish at state and for being invited to compete in the National High School Tournament. Special congratulations to the boys' basketball team for finishing as regular season and FKC tournament runner-up. Congratulations also on another District title and finishing Runner-up at the State Tournament. What a great winter sports season for our Eagle athletics!!!

Kindergarten Enrollment Requirements: Students must be 5 years of age by July 31 to be allowed to attend Kindergarten. If your child turns 5 between August 1<sup>st</sup> and October 15<sup>th</sup>, you may request your child be assessed on their readiness for Kindergarten work. There is paperwork that must be completed prior to this assessment. You will need to contact the school to receive and complete the Written Request for Consideration of Early Kindergarten Entrance. The testing will take place this summer on a date to be determined.

Pre-K Registration: Pre-K Registration days for the 2014-2015 school year have not been set as of now. We have applied for a grant with the Department of Education to expand our Pre-K program to offer a 3-year old class also. We will not hear about this until the middle of April. Registration dates will probably not be until the middle of May. These will be announced in the next newsletter and school announcements.

NeSA Testing: This testing is our Nebraska State Assessment that every student in grades 3-8 & 11 will take in April. These tests will be in Reading, Mathematics, and Science. These tests are very important as we will be compared with every other school district across the state. Your help in re-enforcing the importance of these assessments to your children at home along with ensuring they are well rested and prepared when their test day arrives is greatly appreciated.

Thank you for your support of the school. If you have any further questions or comments, please feel free to contact me or stop by and visit.

Educationally yours,

Mr. Brian Fleischman, Principal  
308-987-2424 x206  
[brian.fleischman@overtoneagles.org](mailto:brian.fleischman@overtoneagles.org)

# 2014 Overton 115<sup>th</sup> Alumni Banquet

## May 25, 2014 6:00 p.m.

### Overton High School Gym

Tickets may be purchased for \$20.00 (includes \$2.00 for the Scholarship Fund) at Security First Bank or R & S Market in Overton; or by mail from:

Marlene Blythe (308-987-2205) or Alyce Bauer (308-987-2280)  
10596 Westside Road P. O. Box 218  
Overton, NE 68863 Overton, NE 68863  
[kblythe@atcjet.net](mailto:kblythe@atcjet.net)

Tickets must be purchased by May 20<sup>th</sup> to provide the caterer with an accurate head count. Caterer is Amber Siekman of Bertrand.

The school building will be open at 4:00 P.M. if you wish to tour it. Please use the south gym door.

If you would like to donate funds to help with costs for mailing this flier, contact Alyce or Marlene. Remember it doesn't have to be your honor year to attend and enjoy the friendships of the other classes ahead or behind yours. Honor classes, please encourage your classmates to attend the banquet. Our banquet numbers have greatly declined in recent years. We need you to attend—you will decide if we continue to meet or not.

Donations for the Scholarship Fund are appreciated and accepted anytime during the year. Contact Alyce Bauer. The alumni gave four \$500 scholarships last year.

We have been notified that the following members have died during the past year. If you know anyone not on this list, please advise Marlene.

1944 - Warren "Mike" Monnington  
1949 - Richard "Spike" Jones  
1953 - Doriene Adkins Gruntorad  
1971 - Karen Bamrick Shafer  
1981 - Teresa Warta Black  
Allyn Chambers, teacher & coach, 60's

The Overton School website is [www.ovr.esu10.k12.ne.us](http://www.ovr.esu10.k12.ne.us). This invitation in the "newspaper" section of the school's website.

From your Overton Alumni Officers

# Sing Around Nebraska

Sing Around Nebraska festival was held on February 22 in Lexington. The following Overton students participated: Sixth Graders, Sam Banzhaf, Kien Martin, Austin Haussler, Ryan Johnson, Sabrina Converse, Fifth Graders, Hannah Smith, Anna Brennan, Callie Weston, and Samantha Sarratt. Nice job fifth and sixth graders!







### What is MRSA?

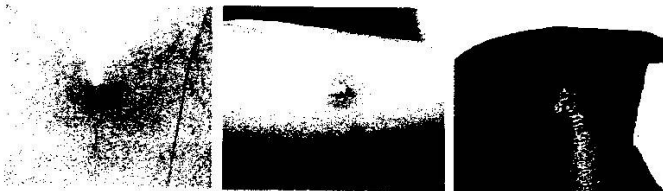
MRSA is methicillin-resistant *Staphylococcus aureus*, a potentially dangerous type of staph bacteria that is resistant to certain antibiotics and may cause skin and other infections. As with all regular staph infections, recognizing the signs and receiving treatment for MRSA skin infections in the early stages reduces the chances of the infection becoming severe. MRSA is spread by:

- > Having direct contact with another person's infection
- > Sharing personal items, such as towels or razors, that have touched infected skin
- > Touching surfaces or items, such as used bandages, contaminated with MRSA

### What are the signs and symptoms?

Most staph skin infections, including MRSA, appear as a bump or infected area on the skin that may be:

- > Red
- > Swollen
- > Painful
- > Warm to the touch
- > Full of pus or other drainage
- > Accompanied by a fever



© Bernard Cohen, MD, Dermatitis, [www.dermatitis.org](http://www.dermatitis.org)

<http://ehp1.cdc.gov>

### What if I suspect an MRSA skin infection?

Cover the area with a bandage and contact your healthcare professional. It is especially important to contact your healthcare professional if signs and symptoms of an MRSA skin infection are accompanied by a fever.

### How are MRSA skin infections treated?

Treatment for MRSA skin infections may include having a healthcare professional drain the infection and, in some cases, prescribe an antibiotic. Do not attempt to drain the infection yourself – doing so could worsen or spread it to others. If you are given an antibiotic, be sure to take all of the doses (even if the infection is getting better), unless your healthcare professional tells you to stop taking it.

### How can I protect my family from MRSA skin infections?

- > Know the signs of MRSA skin infections and get treated early
- > Keep cuts and scrapes clean and covered
- > Encourage good hygiene such as cleaning hands regularly
- > Discourage sharing of personal items such as towels and razors

For more information, please call  
1-800-CDC-INFO or visit [www.cdc.gov/MRSA](http://www.cdc.gov/MRSA).



Developed with support from the CDC Foundation through an educational grant from Pfizer Inc.



1-800-222-1222

**PoisonHelp.hrsa.gov**

When accidents happen with chemicals or medicine, call Poison Help (1-800-222-1222). Get help right away from a nurse, pharmacist, or other poison expert. If someone has trouble breathing, call 911 or your local emergency ambulance number right away.

## SEASONAL TIPS SPRING

**As you begin spring cleaning and work on the yard, follow these simple tips to keep your family safe:**

### **Household Cleaners and Other Chemical Products**

- Keep poisons in the containers they came in. Do not use food containers (such as cups or bottles) to store household cleaners and other strong chemicals.
- Store strong chemicals away from food. Many poisonings occur when one product is mistaken for another.
- Read and follow the directions for use of products. Do this **BEFORE** using the products. Follow the advice carefully.
- Never mix chemicals. Doing so can create a poisonous gas.
- Turn on fans and open windows when using strong chemicals.
- When spraying chemicals, direct spray nozzle away from people and pets.
- Never sniff containers to see what's inside.
- Discard old or outdated products. First aid advice on containers may be incorrect and outdated.
- Call Poison Help (1-800-222-1222) to double check first aid information.
- Even in small amounts, windshield wiper fluid is poisonous. If swallowed, it can cause blindness or death to people and pets.
- Strong chemicals can burn the skin. Drain openers, toilet cleaners, rust removers, and oven cleaners can cause such burns.
- Hydrocarbon liquids (liquids made from petroleum) are poisonous. They include gasoline, kerosene, charcoal lighter fluid, paint thinner, baby oil, lamp oil, and furniture polish.

- If hydrocarbons are swallowed, they can easily get into the lungs. Even a small amount can cause breathing problems. The liquid coats the inside of the lungs. That prevents oxygen from entering the blood stream.

### **Mushrooms**

- Only experts can tell poisonous mushrooms from safe mushrooms.
- Poisonous mushrooms, called "death caps," often grow in yards and parks.
- Eating even a few bites of certain mushrooms can cause liver damage that can kill you.

### **Pesticides**

- Pesticides (pest killers) can be taken in through the skin or inhaled. Even leather shoes and gloves do not offer full protection. Pesticides can be extremely poisonous. Stay away from areas that have been sprayed until the spray has dried or for at least one hour.
- Wear protective clothing when using bug spray or other spray products. Put on a long-sleeve shirt, long pants, socks, shoes, and gloves. Remove and wash clothing after using chemicals.
- If pesticides are splashed onto the skin, rinse with running water for 15–20 minutes. If pesticide contacts clothing, take off the clothing before rinsing skin.
- Many garden chemicals are poisonous to children and adults. These chemicals can be harmful if swallowed or inhaled.



## Overton Speech Team

Congratulations to senior, Dylan Grayek, for placing 1st in Poetry Speaking at the District Speech Competition in North Platte on Marcy 17. Dylan will go on to compete in Class D-1 State Speech in Kearney on March 28.

Freshman, Taylor Sarratt also finished an award-winning season by placing 5th in Entertainment Speaking.

## Summer Food Service Program

Help feed hungry children with  
USDA's



## Summer Food Program

### What is the Summer Food Service Program?

Children need good food all year long, even when they're not in school. The summer food Service Program provides healthy meals to children age 18 and younger, free of charge.

The Summer Food Service Program:

- \* Feeds children in the summer
- \* Gives a boost to public and private non-profit summer programs
- \* Helps give children the best start on the new school year

With summer meals, children get the nutrition they need to learn, play, and grow, during vacation when they do not eat at school.

Sponsors receive funds that support programs serving children when there is no school.

### What kinds of meals will our site serve?

The summer Food Service Program serves meals with milk, meat, fruits, vegetables, and bread. Meals have all the good things that children need to grow up strong and healthy.

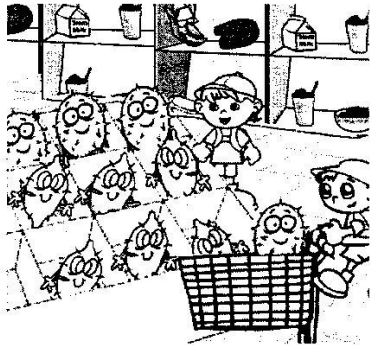
All meals and snacks meet USDA's nutrition standards.

Watch for information on Overton's Summer Meals Program in next month's newsletter.

# Farm to Table Activity Sheet



It takes several steps to get fresh fruits and vegetables to your dinner table. Can you put these scenes in their correct order by placing the correct number under each one?



Fresh fruit and vegetables are now in the store \_\_\_\_\_



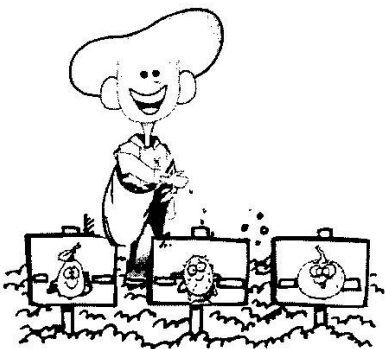
Fruits and vegetables are ripe for picking at the farm \_\_\_\_\_



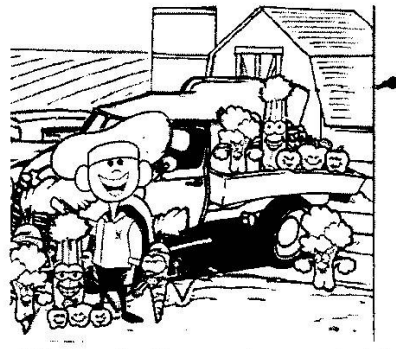
Fruits and vegetables are picked and put into a basket \_\_\_\_\_



Fruits and vegetable plants are growing \_\_\_\_\_



Seed are planted \_\_\_\_\_



All the fruits and vegetables from the farm are on the truck to be delivered to stores \_\_\_\_\_

**HEALTHY  
TIPS**



## **Breakfast GO Power Weekend Breakfasts Offer Variety**

Weekday breakfasts are usually quick and simple. When the weekend comes, give "the most important meal of the day" special attention! Gather the family and fix a favorite or new breakfast dish! It's a great way to encourage breakfast eating and help your kids develop simple cooking skills.

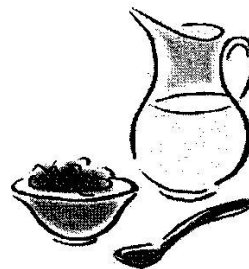
- Choose what time and day works best for busy schedules! If morning just can't work, try breakfast ideas at lunch!
- Get input and help to decide the breakfast meal, make the grocery list and shop ahead of time.

### **Weekend Breakfast Suggestions**

- **French Toast** - sprinkle lightly with powdered sugar and top with sliced strawberries or canned peaches
- **Fruit Smoothie** - enjoy it while eating toasted raisin bread
- **Veggie Omelet** - serve with a small glass of 100% juice and whole grain bagel
- **Healthy Homemade Bran Muffins** - apple slices and low-fat yogurt round out the meal

**Need an easy recipe?** Try this Zucchini & Egg Casserole. Serves 6.

- Ingredients:**
- 5 eggs
  - 3 cups chopped peeled zucchini
  - ½ onion, finely chopped
  - 2 tsp. vegetable oil
  - ½ c. grated Parmesan cheese
  - ¾ c. shredded part skim mozzarella cheese
  - 1 tbsp. parsley
  - 1 tsp. basil
  - ½ tsp. salt



### **Directions:**

In a pan, sauté zucchini and onions in oil until tender; set aside. In a large bowl, beat eggs. Add cheeses, parsley, basil, salt and zucchini mixture. Mix and pour into a greased 1 quart baking dish. Bake at 350 degrees F. for 20-25 minutes until knife inserted near the center comes out clean. Serve.





FROM THE COUNSELOR'S DESK:

APRIL'S CHARACTER TRAITS:

Balance & Caring (Earth Day)

IMPORTANT NOTICE FROM THE UNIVERSITY OF NEBRASKA AT OMAHA!!! UNO will no longer accept ACT or SAT scores sent from high schools starting with students entering in the summer or fall of 2015. These test scores **MUST** be sent to UNO DIRECTLY from the testing agency! Any student interested in attending UNO should make sure they choose UNO's code when registering for these tests. The scores will be sent to UNO for free. UNL already follows this policy for ACT scores. If any parent or student has any questions about this policy, please ask Mrs. Luther.

SENIORS: Have you checked out Overton's website? Click on the "College Information" link.

JUNIORS—it's never too early to look at this yourself! Another site available is SchoolSoup.com. It is supposed to be the largest scholarship database in the world. We have added this link to our website, as well.

SENIORS: If you think you might do your FAFSA online, you need to register for a PIN.

Dependent students must have their parents register. This may be done at [www.pin.ed.gov](http://www.pin.ed.gov). FAFSA is the form that allows you to receive college grants and loans from the government. You will not fill out the form until after the first of the year, but you can apply for your PIN anytime.

POTENTIAL COLLEGE ATHLETES: register with the NCAA clearinghouse! Come see me if you have any questions. ACT scores must be sent to the clearinghouse via ACT, not our school. PLEASE NOTE!!! The NCAA is changing eligibility rules beginning with this year's senior and freshmen classes. Division II schools have increased the number of core classes from 14 to 16. Division I has increased its minimum core class GPA from 2.0 to 2.3. They will also require that 10 of the 16 core course requirements be finished before the beginning of the student's 7<sup>th</sup> semester, or at the beginning of their senior year.

The NAIA has started a registration process for potential athletes, much like the NCAA. If you have a student interested in playing for one of these colleges, check out their website at [www.playnaia.org](http://www.playnaia.org).

The next ACT TESTING DATE is April 12<sup>th</sup>. The deadline to sign-up for this test is past. The following test date is June 14<sup>th</sup>. The sign-up deadline for the June test is May 9<sup>th</sup>.

ACT tests will be in Overton in April and June. Students who qualify for free/reduced lunch prices may be able to receive a fee waiver from ACT. Remember you now **MUST** upload a picture to your application!!!! See Mrs. Luther for more information.

ACT reports that 70% of all test-takers now register online. They are encouraging as many students as possible to sign up in this manner. Information is in Mrs. Luther's office; or you may go to [act.org](http://act.org) for details or to set up a free account.

The NEBRASKA Council On Economic Education is offering a summer workshop for high school juniors. This event will be July 27<sup>th</sup> to August 1<sup>st</sup> at UNL. The cost would be \$300. Details may be found at <http://www.nebraskacouncil.org>.

Students that may be interested in STUDENT EXCHANGE PROGRAMS, see Mrs. Luther. The ASSE International Student Exchange Programs have opportunities for summer, semester, or year-long exchanges to Europe, Asia, or the Americas.

UNL's COLLEGE OF ARCHITECTURE is sponsoring summer workshops for students interested in architecture, landscape architecture, and interior design. These workshops are for students who have completed 2 or more years of high school. The events will be in June on the UNL campus. Please see Mrs. Luther for more information on registration, which is due April 7<sup>th</sup>.

SOUTHEAST COMMUNITY COLLEGE will be sponsoring an AUTOMOTIVE SUMMER CAMP for students interested in a career in automotive repair. The camp is June 13<sup>th</sup> and 14<sup>th</sup> in Milford. The cost of the camp is \$29. Students must be 16 years of age to attend and registration is due by June 2<sup>nd</sup>. See Mrs. Luther for more details.

The NEBRASKA STATE 4-H CAMP is looking for SUMMER CAMP COUNSELORS!!! Students must be at least 15 years old to apply, but would have a very fun job opportunity if you like to be outdoors!! The camp is holding a "Summer Blast Lock-In" on March 15<sup>th</sup> at the camp to inform interested students about the opportunity. See Mrs. Luther for details!!!

The NEBRASKA AGRICULTURAL YOUTH COUNCIL is again sponsoring the NEBRASKA AGRICULTURAL YOUTH INSTITUTE this summer at UNL's East Campus. NAYI will be held from July 7-11. Applications for juniors and seniors interested in attending are due April 15<sup>th</sup>. Applications may be found at [www.nda.nebraska.gov/nayi](http://www.nda.nebraska.gov/nayi). Select the "Apply Now" link to fill out the application. This would be a GREAT, SUPER, FANTASTIC opportunity for SEVERAL of our students!!!

The UNIVERSITY OF NEBRASKA AT LINCOLN is hosting its annual BIG RED CAMPS this summer for high school students to discover a variety of career options. Most camps are held June 8-13 on the UNL campus. Tuition rates are cheaper if applications are sent in before April 1<sup>st</sup>. See Mrs. Luther for more details!!

DAWSON PUBLIC POWER DISTRICT is offering to send up to three students (grades 9-11) to the Nebraska Rural Electric Association Youth Energy Camp at the State 4-H Camp in Halsey. The camp is from July 14-18. If you are interested in attending, please see Mrs. Luther for more information!!!

BRYAN COLLEGE OF HEALTH SCIENCES is planning its 5<sup>th</sup> annual Health Career Camp this summer in Lincoln. This is a great opportunity for high school students to explore health care career options and learn more about the college admissions procedures. The deadline to apply is April 25<sup>th</sup>. More information may be found at: [www.bryanhealth.com/HealthCareerCamp](http://www.bryanhealth.com/HealthCareerCamp).

The UNIVERSITY OF NEBRASKA MEDICAL CENTER will be holding its annual Summer Health Professions Career Workshop from July 29<sup>th</sup> to August 1<sup>st</sup>. Students attending will be able to explore different health careers. This program is for juniors, with at least a 3.0 GPA, who are interested in health careers. Applications may be found in Mrs. Luther's office and are due by June 2<sup>nd</sup>.

JUNIORS: There will be a Spring College Fair at the University of Nebraska at Kearney on Sunday, March 30<sup>th</sup> (I don't have exact times yet, but would assume it would be in the 1:00 - 3:30 range). This would be a SPECTACULAR time to start looking at your college choices!!! I encourage you to attend! If you plan on going to the event, register at [NebraskaCollegeFairs.org](http://NebraskaCollegeFairs.org) and print off the barcode with your personal information. You can have the college reps scan the barcode—and you don't have to fill 100s of postcards! Let me know if you have questions!!

COLLEGE OPEN HOUSES: See Mrs. Luther for registration information.

UNL Red Letter Days: April 18<sup>th</sup>

UNO: Be A Mav Day: Junior Day: April 18<sup>th</sup>; UNO will be hosting a housing Open House and a Peter Kiewit Institute Open House on April 6<sup>th</sup>

WAYNE STATE: Fridays @ WSC: April 18<sup>th</sup>

AUGUSTANA COLLEGE: Visit Days: April 7-11 & 14-17; Junior Visit Days: April 4 & 25

COLLEGE OF HAIR DESIGN: April 11<sup>th</sup>

NORTHEAST COMMUNITY COLLEGE: Explore Northeast Days: April 15

FORT HAYS STATE UNIVERSITY: TigerMania!: for Sophomores & Juniors: Wednesday, April 9<sup>th</sup>; see Mrs. Luther for RSVP information!!

COLLEGE REPRESENTATIVES AT OHS: none are scheduled at this time

#### SCHOLARSHIPS:

\* TITAN MACHINERY is offering a SPONSORSHIP for students interested in the diesel mechanics program at Central Community College. This sponsorship covers the cost of tuition, fees, books, and tools, but not the cost of room and board. Upon completion of the program, students would be asked to work for Titan Machinery for two years. Please see Mrs. Luther for details.

\* LOCAL SCHOLARSHIPS can be found on the Overton Public School website. Click on the "College Information" tab, then the "Scholarship Application" tab. There should be a list of applications available there! Please take note of qualifications of applicants, as well as the DUE DATES!! Many are due March 15<sup>th</sup>, but others are due in April. If you have questions, please see Mrs. Luther! There are also scholarship applications you can check out on the Lexington High School Guidance page. They list some applications that are open to all Dawson County residents!

\* I received a fax with all of the following scholarship applications listed on it. The fax did not have a lot of information about each one, but if you are interested, it might be worth looking up the websites and seeing what is involved.

PETER PASULA STUDY HABITS SCHOLARSHIP: \$500 due April 1<sup>st</sup>: Student must be enrolling in any program that is at least 2 years in length by the fall of 2014 and answer an essay question on the online application, which can be found at: [www.mortgagebrokerscoquitlam.com](http://www.mortgagebrokerscoquitlam.com).

MAPLE LEAF DENTISTRY SCHOLARSHIP: \$500 due May 30<sup>th</sup>: Student must be enrolling in any program that is at least 2 years in length by the fall of 2014, have a minimum 3.0 GPA, and has to have recorded at least 100 volunteer hours over the last 2 years.

Applications are at: [www.peterboroughdentists.com](http://www.peterboroughdentists.com).

\* The AmeriCorps National Civilian Community Corps offers a full-time, 10-month, residential service program for 2,800 young adults between the ages of 18-24. Students receive room and board, a small living stipend, and leadership development, in addition to \$5550 to help pay for college or pay back existing school loans. See Mrs. Luther for further details.

\* The NEBRASKA COOPERATIVE EDUCATION FOUNDATION is offering 3 \$1100 awards to students attending UNL's College of Agricultural Sciences and Natural Resources. One scholarship will be for an incoming freshman and two going to upper-classmen. A \$600 scholarship will be available for students majoring in agribusiness or ag production systems at the Nebraska College of Technical Agriculture in Curtis. Scholarships will be awarded to students whose parents are members, directors or employers of Nebraska cooperative for at least 3 years. Applications are at [www.nebr.coop](http://www.nebr.coop) and are due April 15<sup>th</sup>.

\* CENTRAL COMMUNITY COLLEGE awards \$150 SUMMER SCHOLARSHIPS for junior and senior students who plan to take a summer course through CCC. These applications will be available on the CCC website on March 7<sup>th</sup> and are due April 18<sup>th</sup>. ACT, Compass, or Asset scores are needed for the application. See Mrs. Luther for more details.

\* DAWSON COUNTY FARM BUREAU has various awards available. The DAWSON COUNTY FARM BUREAU SCHOLARSHIP is for students who are (or have parents that are) Dawson County Farm Bureau Members. Students majoring in an agricultural field will be given first priority. Three awards of \$500 will be given. See Mrs. Luther for an application, which is due April 2. The YOUNG FARMERS & RANCHERS SCHOLARSHIP is a \$1000 award for students between the ages of 18-35 who are enrolling full time in an agriculture-related major. The student must be a member or a dependent member of Nebraska Farm Bureau. Applications can be found at [www.nefb.org](http://www.nefb.org) and are due May 1<sup>st</sup>. CHARLES MARSHALL EDUCATIONAL LOANS are also available for Farm Bureau members. Applications for college loans are due July 1<sup>st</sup>.

- \* The HIGH PLAINS CHAPTER OF THE AMERICAN METEOROLOGICAL SOCIETY and the NATIONAL WEATHER ASSOCIATION have established the JIM JOHNSON SCHOLARSHIP. This \$500 award is for a senior who plans a career in a physical science (chemistry, physics, astronomy, earth science, geology, hydrology, meteorology, soil science, or oceanography). Applications may be obtained in Mrs. Luther's office and are due April 15<sup>th</sup>.
- \* The NEBRASKA LEGAL PROFESSIONALS ASSOCIATION is awarding 2 scholarships (1 for \$1000 and 1 for \$500) for students pursuing a career in law. Applications are in Mrs. Luther's office and are due March 31<sup>st</sup>.
- \* The LINCOLN BUILDERS BUREAU will award a \$750 scholarship to a dependent of an employee who is planning to attend college or trade school next fall. Mrs. Luther has applications, which are due April 1<sup>st</sup>. You may go to [www.buildersbureau.com](http://www.buildersbureau.com) to verify if you are eligible to apply.
- \* The JOHNNY BAXTER CARRIAGE HOUSE FOUNDATION will award several \$1000 scholarships to students pursuing a degree in an automotive-related field at one of the Nebraska Community Colleges. Applications, which are due April 4<sup>th</sup>, are available from Mrs. Luther.
- \* The NEBRASKANS FOR PEACE offers 9 scholarships ranging from \$100 to \$500 for seniors pursuing a college education. Applications are based upon essays. See Mrs. Luther for all of the details. This scholarship is due April 14<sup>th</sup>.
- \* The NEBRASKA SCHOOL COUNSELOR ASSOCIATION is now accepting applications for their \$500 scholarship. Applications include a written essay and must be postmarked by April 4<sup>th</sup>. See Mrs. Luther for applications.
  
- \* The Omaha Chapter of the ASSOCIATION OF INFORMATION TECHNOLOGY PROFESSIONALS is offering several scholarships to students in the Mid-West who have a goal of receiving an associate's or bachelor's degree in Information Technology, Computer Science, or a related field. Instructions and application forms (which are due May 1<sup>st</sup>), may be found at [www.aitpomaha.org](http://www.aitpomaha.org).
- \* SOUTHEAST COMMUNITY COLLEGE is offering a variety of music scholarships for students who would like to participate in choir or continue voice/piano studies, regardless of your major at SCC. Scholarships are due May 1<sup>st</sup>, but the earlier you apply the better!



## SCHOLARSHIP SEARCH SITES:

- \* [www.Fastaid.com](http://www.Fastaid.com)
- \* [www.scholarships.com](http://www.scholarships.com)
- \* [www.fastweb.com](http://www.fastweb.com)
- \* [www.educationquest.com](http://www.educationquest.com)
- \* [www.scholarshipmonkey.com](http://www.scholarshipmonkey.com)
- \* [www.ScholarshipExperts.com](http://www.ScholarshipExperts.com)
- \* [www.Schoolsoup.com](http://www.Schoolsoup.com)
- \* [www.CollegeBoard.com](http://www.CollegeBoard.com)

## TRACTOR SAFETY COURSES

Any students that are 14 or 15 years of age are required to attend a tractor safety course in order to legally operate a tractor that is over 20 horsepower for employers other than their parents. These safety courses are planned in a variety of locations across the state this spring. More information on registrations, etc., will be coming very soon. As of now, here is a list of training locations and dates:

May 22-23:	Kearney	Buffalo County Fairgrounds
May 28-29:	Concord	Haskell Ag Lab
June 2-3:	North Platte	WCREC
June 5-6:	Valentine	Cherry County Fairground
June 12-13:	Gering	Farm & Ranch Museum
June 16-17:	Grand Island	College Park
June 19-20:	Mead	ARDC

## ABC/PTO HAPPENINGS

The next ABC/PTO meeting is Monday, April 7 at 7:00 in the commons area. We will be discussing the Reading Carnival. The Reading Carnival is Monday, April 28.

**MINUTES OF THE OVERTON PUBLIC SCHOOL BOARD OF EDUCATION**  
**REGULAR MEETING**  
**March 10, 2014**  
**7:30 p.m.**

**Board President called the meeting to order. Members Present:**

Dolan  
Hasty  
Meier  
Rudeen  
Walahoski

**Notification:** The March 10, 2014 meeting of the Overton Public School Board of Education was posted at the Overton Public School, on the Overton Public School web site, Beacon Observer, Post Office, R & S Market, and the Security First Bank

**Open Meetings Information:** To be in compliance with LB 898, The Nebraska Open Meetings Act, Board President informed the public that a copy of the Open Meetings Law is posted near the LMC check-out counter.

**Administration Present:** Mark Aten, Superintendent, Brian Fleischman, Principal

**Guests Present:** Mackenzie Beavers

**Public Comments:** None

**Reports:** Mackenzie Beavers and Mr. Fleischman reported on Student Council activities

**Communications:** None

**Other:** The board excused the absence of board member Johnson

**Action Items:**

1. **Agenda** - Moved by Hasty, seconded by Walahoski to approve the agenda of the March 10, 2014 regular monthly board meeting as presented. Motion 5-0-1. Voting Yes: (5), Dolan, Hasty, Meier, Rudeen, and Walahoski. Voting No: (0), Absent: (1): Johnson.
2. **Minutes** - Moved by Meier, seconded by Dolan to approve the minutes of the February 10, 2014 regular monthly board meeting. Motion 5-0-1. Voting Yes: (5), Dolan, Hasty, Meier, Rudeen, and Walahoski. Voting No: (0), Absent: (1): Johnson.
3. **Claims** - Moved by Walahoski, seconded by Hasty to pay the March General Fund bills in the amount of \$49,500.85. Motion 5-0-1. Voting Yes: (5), Dolan, Hasty, Meier, Rudeen, and Walahoski. Voting No: (0), Absent: (1): Johnson.
4. Moved by Hasty, seconded by Walahoski to approve first reading of board policy 3000 series. Motion 5-0-1. Voting Yes: (5), Dolan, Hasty, Meier, Rudeen, and Walahoski. Voting No: (0), Absent: (1): Johnson.
5. Moved by Meier, seconded by Hasty to approve Security First Bank as the official depository of all district funds. 5-0-1. Voting Yes: (5), Dolan, Hasty, Meier, Rudeen, and Walahoski. Voting No: (0), Absent: (1): Johnson.

6. Moved by Hasty, seconded by Walahoski to approve Odysseyware as an addition to the curriculum. 5-0-1. Voting Yes: (5), Dolan, Hasty, Meier, Rudeen, and Walahoski. Voting No: (0), Absent: (1): Johnson.
- 7.00 Moved by Meier, seconded by Walahoski to adjourn at 9:36 p.m. 5-0-1. Voting Yes: (5), Dolan, Hasty, Meier, Rudeen, and Walahoski. Voting No: (0), Absent: (1): Johnson.

**Board Reports and Discussion Topics:**

**1. Board Reports:**

- a. Upcoming NASB Calendar of Events
- b. Interlocal: Concrete Project
- c. Transportation: Bus 1994 - transmission

**2. Discussion Topics:**

- a. April regular board meeting date and time. April 14, 2014 beginning at 7:30 p.m. in the LMC
- b. Projects
- C. Review 4000 Series Board Policies
- d. Preschool Expansion Grant
- e. Bleacher Removal

**Administrative Reports:**

**Principal's Report:**

1. Upcoming Events and Calendar
2. Enrollment Update
3. Odysseyware Program
4. 2014-2015 Handbooks

**Superintendent's Report:**

1. Enrollment Option Report
2. Option Enrollment-
  - Out – a.
  - In - a.
  - b.Change of status –
  - a. None
3. Budget Review
4. Food Program Update
5. Budget Update
6. Financial Summary

# April 2014

## Overton School Activities

Sunday	Monday	Tuesday	Wednesday	Thursday	Friday	Saturday																																																																																																								
		<b>1</b> Cheer try-outs 6PM. FB drills 8th gr. 7AM.  HS Quiz Bowl @ ESU10.  School nurse AM. Swing Choir 7AM.	<b>2</b> Golf @ Cambridge 10AM.  Inter-High day @ North Platte.  Jazz band 7:15AM.	<b>3</b> FB drills 7AM.  State FBLA Leadership Conference.	<b>4</b> State FBLA Leadership Conference.  TR @ Pleasanton (Kearney) 8:45AM.	<b>5</b> State FBLA Leadership Conference.																																																																																																								
<b>6</b>	<b>7</b> ABC/PTO mtg. 7PM.  FB drills 7AM. State FCCLA.	<b>8</b> FB drills 8th gr. 7AM. Golf @ Elwood (Lakeside) 10AM. JHTR Overton Quad 1PM.  School nurse AM. State FCCLA. Swing Choir 7AM.	<b>9</b> FKC Quarterly mtg. 5:30PM.  Jazz band 7:15AM.	<b>10</b> Dance 6PM. FB drills 7AM. Kdgt hospital visit.	<b>11</b> FB drills 7AM. TR @ Axtell (Wilcox) 9AM.	<b>12</b> ACT test @ Overton.  Prom 5PM pictures, 6:30PM dinner.																																																																																																								
<b>13</b> Dance 6PM.  Palm Sunday	<b>14</b> Dance try-outs 6PM.  FB drills 7AM. FKC Quiz Bowl @ SEM.  Music boosters mtg. 6:30PM. School board mtg. 7:30PM.	<b>15</b> FB drills 8th gr. 7AM. Golf @ Arapahoe 10AM. JHTR @ Elm Creek 2:30PM. Newsletter articles due. School nurse AM. Swing Choir 7AM. TE204 students 8-10AM.	<b>16</b> 2nd gr. field trip to Rowe Sanctuary.  Jazz band 7:15AM.	<b>17</b> 1st gr. to Senior Center 12:30.  FB drills 7AM.  Golf @ Holdrege 3:30PM.  TR @ Bertrand 10AM.	<b>18</b> Good Friday NO SCHOOL - Spring Break.	<b>19</b>																																																																																																								
<b>20</b> Easter Sunday	<b>21</b> Golf @ Lexington (Lakeside) 4PM.  NO SCHOOL - Spring Break.	<b>22</b> Earth Day Golf @ Alma 10AM. JHTR @ Elwood 2PM. NO SCHOOL. TR @ Overton Invite 9AM.	<b>23</b> 3rd gr. field trip to Hastings museum.  Administrative Professionals Day Jazz band 7:15AM.	<b>24</b> District Music @ TBA (large groups).  FB drills 7AM.	<b>25</b> Arbor Day District Music @ TBA (small groups).  TR @ Don Bader 2PM.	<b>26</b>																																																																																																								
<b>27</b>	<b>28</b> 5th/6th bowling Reading Incentive PM.  7-12 spring concert 7PM.  ABC/PTO Reading Carnival AM, Fun Run PM.  FB drills 7AM.	<b>29</b> AgFest 4th/5th gr. in Lexington.  Athletic Booster mtg. 7PM.  JHTR @ Bertrand 2:30PM.  School Nurse AM. Swing Choir 7AM.	<b>30</b>	<table border="1"> <thead> <tr> <th colspan="7">Mar 2014</th> </tr> <tr> <th>S</th> <th>M</th> <th>T</th> <th>W</th> <th>T</th> <th>F</th> <th>S</th> </tr> </thead> <tbody> <tr> <td></td> <td></td> <td></td> <td></td> <td></td> <td></td> <td>1</td> </tr> <tr> <td>2</td> <td>3</td> <td>4</td> <td>5</td> <td>6</td> <td>7</td> <td>8</td> </tr> <tr> <td>9</td> <td>10</td> <td>11</td> <td>12</td> <td>13</td> <td>14</td> <td>15</td> </tr> <tr> <td>16</td> <td>17</td> <td>18</td> <td>19</td> <td>20</td> <td>21</td> <td>22</td> </tr> <tr> <td>23</td> <td>24</td> <td>25</td> <td>26</td> <td>27</td> <td>28</td> <td>29</td> </tr> <tr> <td>30</td> <td>31</td> <td></td> <td></td> <td></td> <td></td> <td></td> </tr> </tbody> </table> <table border="1"> <thead> <tr> <th colspan="7">May 2014</th> </tr> <tr> <th>S</th> <th>M</th> <th>T</th> <th>W</th> <th>T</th> <th>F</th> <th>S</th> </tr> </thead> <tbody> <tr> <td></td> <td></td> <td></td> <td></td> <td></td> <td></td> <td>1 2 3</td> </tr> <tr> <td>4</td> <td>5</td> <td>6</td> <td>7</td> <td>8</td> <td>9</td> <td>10</td> </tr> <tr> <td>11</td> <td>12</td> <td>13</td> <td>14</td> <td>15</td> <td>16</td> <td>17</td> </tr> <tr> <td>18</td> <td>19</td> <td>20</td> <td>21</td> <td>22</td> <td>23</td> <td>24</td> </tr> <tr> <td>25</td> <td>26</td> <td>27</td> <td>28</td> <td>29</td> <td>30</td> <td>31</td> </tr> </tbody> </table>		Mar 2014							S	M	T	W	T	F	S							1	2	3	4	5	6	7	8	9	10	11	12	13	14	15	16	17	18	19	20	21	22	23	24	25	26	27	28	29	30	31						May 2014							S	M	T	W	T	F	S							1 2 3	4	5	6	7	8	9	10	11	12	13	14	15	16	17	18	19	20	21	22	23	24	25	26	27	28	29	30	31
Mar 2014																																																																																																														
S	M	T	W	T	F	S																																																																																																								
						1																																																																																																								
2	3	4	5	6	7	8																																																																																																								
9	10	11	12	13	14	15																																																																																																								
16	17	18	19	20	21	22																																																																																																								
23	24	25	26	27	28	29																																																																																																								
30	31																																																																																																													
May 2014																																																																																																														
S	M	T	W	T	F	S																																																																																																								
						1 2 3																																																																																																								
4	5	6	7	8	9	10																																																																																																								
11	12	13	14	15	16	17																																																																																																								
18	19	20	21	22	23	24																																																																																																								
25	26	27	28	29	30	31																																																																																																								

# April 2014

## Overton School Breakfast (\*)/Lunch Menus

Sunday	Monday	Tuesday	Wednesday	Thursday	Friday																																																																																																																	
	ALT MEAL: Mozzarella toast & marinara sauce	1 *French toast sticks & eggs  Chicken fried steak, mashed potatoes & gravy, corn, apple sauce, peaches, dinner roll	2 *Waffles & ham  Hot dog bar, sweet potato fries, green beans, pears, strawberries	3 *Omelet & english muffin  Spaghetti & meat sauce, salad mix, relish tray, baked apples, fruit cup, garlic toast	4 *Banana muffin & yogurt  Cheese pizza, peas & carrots, celery & cheese, kiwi, cherry crisp																																																																																																																	
6 ALT MEAL: Corn dogs	7 *Yogurt parfait & cereal  Chicken & noodles, mashed potatoes, roasted carrots, jello, apples, dinner roll	8 *Breakfast on a stick  Walking tacos, shredded lettuce, tomatoes, corn salad, grapes, pears	9 *Griddle sandwich  Chicken teriyaki, rice, stir fry veggies, applesauce, bananas	10 *Biscuits & gravy  Pizza burger, shredded mozzarella cheese, broccoli & cheese, relish tray, tropical fruit	11 *Waffles & egg  Cheese quesadilla, salad mix, tomato slices, oranges, jello																																																																																																																	
13 ALT MEAL: Pizza	14 *Breakfast pizza  Lasagna, salad mix, green beans, berry cup, oranges, garlic toast	15 *Oatmeal bar & sausage  Chicken patty sandwich, sweet potato fries, peaches, jello, apple crisp	16 *Waffle casserole  Chef salad, relish tray, mandarin oranges, melon tray, dinner roll	17 *Chocolate donut & egg  Corn dog, California blend veggies, corn, apples, strawberries	18 NO SCHOOL																																																																																																																	
20 ALT MEAL: Ham & cheese sandwich	21 NO SCHOOL	22 NO SCHOOL	23 *Eggs & poptarts  Pork roast, mashed potatoes & gravy, roasted carrots, cherry salad, peaches, dinner roll	24 *Breakfast combo & pancakes  Crispitos & cheese, shredded cheese, relish tray, strawberries, pears	25 *Cinnamon rolls & egg  Chicken nuggets, fries, corn, watermelon, fruit cocktail, dinner roll																																																																																																																	
27 ALT MEAL: Shredded pork sandwich	28 *Breakfast cookie & ham  Make your own sub, salad mix, pickles, relish tray, jello, baked apples	29 *Breakfast pizza  Super nachoes, shredded lettuce, black bean salad, tropical fruit, grapes	30 *Donut holes & yogurt  Roast chicken, au gratin potatoes, green beans, mandarin oranges, bananas, dinner roll	<table border="1"> <thead> <tr> <th colspan="7">Mar 2014</th> <th colspan="7">May 2014</th> </tr> <tr> <th>S</th><th>M</th><th>T</th><th>W</th><th>T</th><th>F</th><th>S</th> <th>S</th><th>M</th><th>T</th><th>W</th><th>T</th><th>F</th><th>S</th> </tr> </thead> <tbody> <tr> <td></td><td></td><td></td><td></td><td></td><td></td><td>1</td> <td></td><td></td><td></td><td></td><td></td><td>1</td><td>2</td><td>3</td> </tr> <tr> <td>2</td><td>3</td><td>4</td><td>5</td><td>6</td><td>7</td><td>8</td> <td>4</td><td>5</td><td>6</td><td>7</td><td>8</td><td>9</td><td>10</td> </tr> <tr> <td>9</td><td>10</td><td>11</td><td>12</td><td>13</td><td>14</td><td>15</td> <td>11</td><td>12</td><td>13</td><td>14</td><td>15</td><td>16</td><td>17</td> </tr> <tr> <td>16</td><td>17</td><td>18</td><td>19</td><td>20</td><td>21</td><td>22</td> <td>18</td><td>19</td><td>20</td><td>21</td><td>22</td><td>23</td><td>24</td> </tr> <tr> <td>23</td><td>24</td><td>25</td><td>26</td><td>27</td><td>28</td><td>29</td> <td>25</td><td>26</td><td>27</td><td>28</td><td>29</td><td>30</td><td>31</td> </tr> <tr> <td>30</td><td>31</td><td></td><td></td><td></td><td></td><td></td> <td></td><td></td><td></td><td></td><td></td><td></td><td></td> </tr> </tbody> </table>		Mar 2014							May 2014							S	M	T	W	T	F	S	S	M	T	W	T	F	S							1						1	2	3	2	3	4	5	6	7	8	4	5	6	7	8	9	10	9	10	11	12	13	14	15	11	12	13	14	15	16	17	16	17	18	19	20	21	22	18	19	20	21	22	23	24	23	24	25	26	27	28	29	25	26	27	28	29	30	31	30	31												
Mar 2014							May 2014																																																																																																															
S	M	T	W	T	F	S	S	M	T	W	T	F	S																																																																																																									
						1						1	2	3																																																																																																								
2	3	4	5	6	7	8	4	5	6	7	8	9	10																																																																																																									
9	10	11	12	13	14	15	11	12	13	14	15	16	17																																																																																																									
16	17	18	19	20	21	22	18	19	20	21	22	23	24																																																																																																									
23	24	25	26	27	28	29	25	26	27	28	29	30	31																																																																																																									
30	31																																																																																																																					

\*Milk and choice of fruit or juice each breakfast.

Milk served each meal.